

Welcome to

THE ENGLISH
LAKE DISTRICT
WORLD HERITAGE SITE

Visit

KESWICK



the lake district



2022 | [visitkeswick.com](https://www.visitkeswick.com)



KEEP IT IN KESWICK. BOOK DIRECT.

You can save local businesses up to 20% by booking your stay through visitkeswick.com or by booking direct.

This way, 100% of what you pay goes back into Keswick's economy.

Visit

THE ENGLISH LAKE DISTRICT
WORLD HERITAGE SITE

For more information
visitkeswick.com

Visit
KESWICK
the lake district

Welcome

After a delayed start, 2021 saw large numbers of visitors to Keswick enjoying a well-earned break, seeking adventure, or getting together with friends and family. For many it was their first visit to Keswick, but we know that it won't be their last.

As we write this, our centenary Guide, we are optimistic for a better year for everyone, and we can't wait to welcome you to Keswick so you can see for yourself why it has been a much loved holiday destination for so long.

So, put your feet up, grab a cuppa (or perhaps a glass of something stronger) and start planning your 2022 Keswick holiday.

Vanessa & Karen
Keswick Tourism Association



Vanessa Metcalfe
Tourism Manager



Karen Mullarkey
Tourism Officer

Guide Publication

Published by Bucket and Spade on behalf of:



Keswick Tourism Association,
50 Main St, Keswick,
Cumbria, CA12 5JS.

017687 75738 · info@keswick.org · visitkeswick.com

Follow us



@keswicktourism



visitkeswickthelakedistrict



visitkeswick



'Keswick the Lake District'

Contents

- 4.....Visit Keswick, a favourite destination in the past, present and future
- 6.....Adventure Keswick, then and now
- 8.....The changing face of retail
- 10....Keswick – what's the attraction?
- 12....Reconnect on Keswick to Threlkeld railway path
- 14....Bridges around Keswick
- 16....Outdoor pursuits
- 20....Attractions and spa & beauty
- 24....Shopping & galleries
- 27.....Events
- 28....Food & drink
- 31....Choosing your accommodation
- 32....Serviced accommodation
- 36.....Self catering accommodation
- 40.....Camping, glamping, caravans & more
- 42.....Full accommodation listings
- 48.....Getting around

Photography

Photographs in the editorial section of the guide are from the photo library of Keswick Tourism Association, its members, and staff.

Cover photo: David Jackson – Castlerigg.co.uk

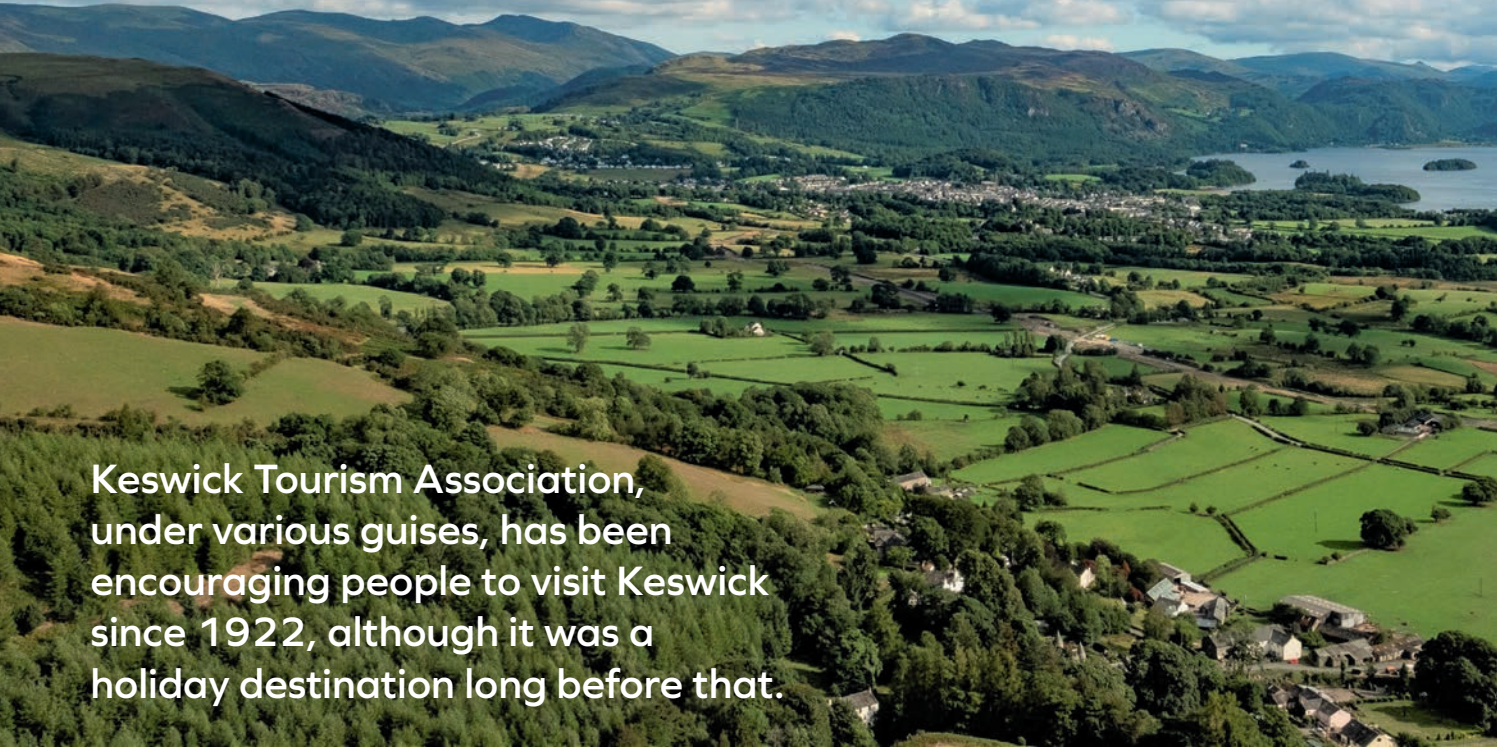
David Woodthorpe

Our thanks also to the many visitors to the town who have submitted photos for use both in the Guide and online.

Please note: Entries in this guide have been compiled by Keswick Tourism Association from information supplied by its members in Summer 2021. Whilst every effort has been made to ensure the information was correct at time of going to press, Keswick Tourism Association can accept no responsibility for any changes, errors and omissions, nor for any inconvenience arising thereof.

Visit Keswick

a favourite destination
in the past, present
and future



Keswick Tourism Association, under various guises, has been encouraging people to visit Keswick since 1922, although it was a holiday destination long before that.

The Lake Poets' descriptions of the beauty of the area began to drive people to visit in the late 18th century and the creation of the Cockermouth, Keswick and Penrith Railway line in 1861 made the town more accessible for visitors.

By the 20th century, tourism had become and continues to be Keswick's main industry. Boasting rich history and culture, with beautiful surroundings, and a huge variety of things to see and do, it comes as no surprise that Keswick has become a popular, year-round destination for people of all ages.

In this, our centenary guide, we aim to share with you a little of Keswick's past as well as all the reasons you should visit today and perhaps even a little glimpse into the future.





DID YOU
KNOW ?

The Keswick on
Derwentwater
Town Publicity
Association was
formed in the
same year as
the BBC.



Adventure Keswick then and now

Many people visiting Keswick are seeking an adventure in the great outdoors and that is nothing new.

Keswick has always been known for fell walking, running, rock climbing and water sports and has, over the years been a magnet for well known adventurers. The Keswick born Abraham brothers, George and Ashley, are known not only for their rock climbing exploits but also for their exceptional photographs that form a valuable record of the evolution of early rock-climbing in the English Lake District. In the 1920's Millican Dalton, the self-styled "Professor of Adventure" would lead parties in mountain rapid shooting, rafting, hair's-breadth escapes and climbing.

Of course, all the activities mentioned remain popular today and there are plenty of modern day Millican Daltons on hand to ensure you enjoy your adventures and to keep you safe.

People's love for adventure and excitement has led to new activities developing over the years with mountain biking, paddleboarding, zip wires and via ferrata being just a few examples. What will be the next big thing? Only time will tell.

You can find out more about outdoor activities in Keswick on pages 16 – 19 or by visiting www.visitkeswick.com/adventure-keswick.



Keswick Climbing Wall



Adventure in THE ENGLISH LAKE DISTRICT WORLD HERITAGE SITE



Go Ape, Whinlatter



Go Ape, Whinlatter

DID YOU
KNOW ?

Millican Dalton lived in a cave, during the summer months, on the side of Castle Crag. He lived there for nearly 50 years.



Cyclewise





The changing face of retail

Keswick is well known for its outdoor clothing shops, however, it hasn't always been that way and even today, there is far more to the shops in Keswick than just waterproofs and fleeces.

Back when Keswick Tourism Association was first formed, the Main Street and Market Square looked very different. Whilst there were shops and cafes aimed at visitors to the town, you would also find the same types of shops that would be on any other High Street – grocer, butcher, ironmonger, baker and fishmonger. In fact, the local fishmonger, Percy S. Todd, took an advertisement in our earliest Keswick guide, stating that they sold “*a large and varied selection of prime fresh and cured fish*”,

Although you will no longer find a fishmonger in Keswick you will find a treasure trove of unique, and sometimes quirky, shops and galleries selling a wide range of items to purchase as gifts or for yourself to remind you of your time in Keswick. Our galleries display and sell the most wonderful

pieces of art, ranging from paintings to pottery and jewellery to woodwork, to suit all budgets.

In the marketplace, side streets and alleyways, you will find wonderful shops selling everything from furniture and household goods to books, games and cards, cheese and chocolate to locally produced spirits and mementos such as badges, pennants and magnets.

You can find out more about the shops and galleries in Keswick on pages 24 – 26 or by visiting www.visitkeswick.com/shopping.

If you can't make it to Keswick why not visit our online shopping and vouchers page at

[www.visitkeswick.com/
support-keswick-shoponline](http://www.visitkeswick.com/support-keswick-shoponline)



DID YOU KNOW ?

Keswick has held a market since 1276 and the current award-winning market is held every Thursday (Feb-Dec) and Saturday.



Keswick – what's the attraction?



Many people come to Keswick to experience its beauty and enjoy outdoor activities, but Keswick has so much more to offer.

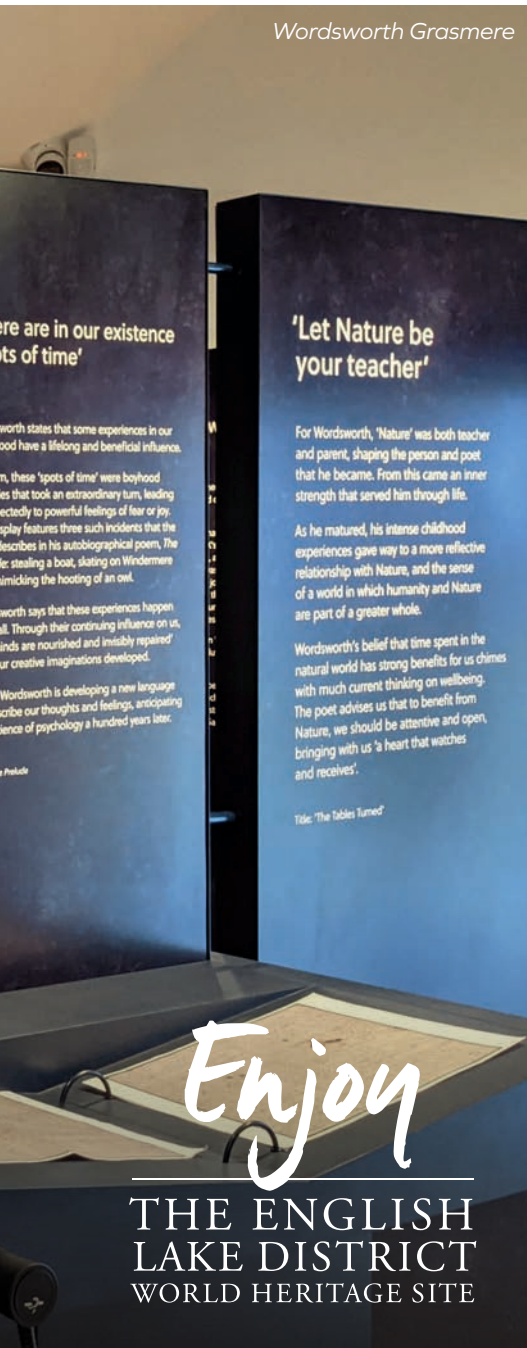
We may no longer have the Pavilion dance hall, as advertised in our 1920's holiday guide, but we most certainly do still have the wonderful Alhambra Picture House (as it was called), newly re-opened with a second screen after a full refurbishment. Other attractions that appeared in that early guide, which remain today, include the Keswick Launch and "Keswick's Latest Attraction", a 9-hole Pitch and Putt in Hope Park although there is no longer a professional on hand to give lessons. Coach tours were also very popular, with multiple garages in the town offering this service and you can still take tours with Mountain Goat and English Lakes Tours. As tourism has grown and developed, so has the number and range of attractions on offer. From museums, historic houses and creative workshops

to wildlife parks, mining experiences and brewery/distillery tours, Keswick really does have something for everyone.

You can find out more about everything Keswick has to offer on pages 20 – 23 or by visiting www.visitkeswick.com/attractions.



Wordsworth Grasmere



Lake District Wildlife Park



The Puzzling Place



Derwent Pencil Museum



Keswick Museum



Mirehouse & Gardens

Reconnect on Keswick to Threlkeld railway path

Reconnect in
THE ENGLISH
LAKE DISTRICT
WORLD HERITAGE SITE

The Cockermouth, Keswick and Penrith railway opened in 1864 relying firstly on iron and steel trade and subsequently on tourism. The line West of Keswick closed in 1966 whilst the East section had a short reprieve until 1972 thanks to protests by the town's hoteliers.

The trail between Keswick and Threlkeld was created by the Lake District National Park following acquisition of part of the former railway track.

In December 2015 Storm Desmond wreaked havoc on the local area and the trail. Five years later, to the day, the route finally fully re-opened much to the delight of walkers and cyclists. Two bridges were replaced and a third, Rawsome's Bridge, was repaired. A new section of path was created to replace the 200m stretch that was washed away. Most exciting of all, Big Tunnel (or Bobbin Tunnel) was excavated, some forty years after it was filled in, during the construction of the Greta Bridge in the 1970's. This replaced the boardwalk section that had become unsafe.

FACT FILE

There is level access at the Keswick Leisure Centre end of the trail

At the Threlkeld end there is a zigzag path to lessen the gradient.

There is a pay and display car park at Keswick Leisure Centre with two disabled spaces.

There are temporary toilets at the former Keswick railway station, including an accessible toilet.

Keswick parkrun takes place along the trail every Saturday at 9am.

Distance: 10k (out and back)
Grading: Easy Access

The trail starts from just beyond Keswick Leisure Pool, close to Fitz Park, and runs for 5km to Threlkeld making a 10km out and back route. It is now a multi-user trail suitable for walkers, runners, wheelchairs, mobility scooters and cyclists. The trail is smooth-surfaced with tarmac for the entire length and gradients are very low. The trail can be very popular at times so please be courteous towards other users.

There are panels along the length of the trail with information about local nature and wildlife, the history of the railway and the bobbin mill and the impact of Storm Desmond to the trail and local area. There are regular seats along the route with a picnic area close to the entrance of the tunnel.

The Threlkeld end of the trail comes out onto the A66. The first left turn will take you into the village of Threlkeld where you will find pubs and a cafe. You can also catch the bus back into Keswick from this point.

You can find out more about the route at:
www.visitkeswick.com/keswick-to-threlkeld-railway-path.



Bridges around Keswick



Around Keswick you'll find bridges both ancient and modern. Whilst walking in the area you will come across numerous packhorse bridges which linked together the packhorse trails. In the 1700's, before improvements to the road networks were made, the trails were used to transport goods of all kinds around the fells and valleys. The low sides of the bridges were designed so as not to get in the way of the loads with a single arch to form a simple strong structure capable of carrying huge weights. Many are classified as listed buildings due to their historical or architectural interest.



Chinese Bridge, as it is known locally, so called due to its shallow arch, crosses the River Derwent just before it enters Derwentwater. The wooden bridge it replaced was also known as Chinese bridge due to the style. You'll cross this bridge as part of the Derwentwater Walk, a 10-mile low level route around the lake.



Watendlath Packhorse Bridge

- This attractive single span packhorse bridge in the hamlet of Watendlath crosses the beck adjacent to Watendlath Tarn. The bridge forms part of the old packhorse trails that traverse the fells and like many packhorse bridges, has been protected as a grade 2 listed building since 1967.



Ashness Bridge is one of the most photographed bridges in the Lake District. Its image is often seen adorning biscuit tins and tea towels. This fine small packhorse bridge, striding over a fast-running beck, is a perfect foreground for the view north over Derwentwater and Bassenthwaite with the mass of Skiddaw rising steeply above Keswick.



Grange Bridge - This double arched bridge takes you into the village of Grange in Borrowdale. Four miles South of Keswick the bridge, which spans the River Derwent, takes you from the main Borrowdale valley road into the village. The riverside here is a popular stopping place for picnics. The bridge dates back to 1675.



Thirlmere Dam -

Whilst not strictly a bridge an impressive view down Thirlmere Reservoir can be seen from the narrow road along the top of the dam. The dam was created over a hundred years ago from two small lakes and the submerging of two villages at the northern end of the Thirlmere valley.



Knight's Bridge - A very important footbridge for both visitors and locals alike in that it links Fitz Park with the town centre via Stanger Street. It provides access to the playground, sports clubs and to the car park providing an off-road route into town. The current bridge incorporates a ramp to assist access.



Portinscale Suspension Bridge - The main road from Keswick to Cockermouth used to take you through the village of Portinscale via a two arched stone bridge known as the Long Bridge. Following flood damage in 1954, it was replaced by a temporary metal structure. When the village was by-passed in the 1960's, the current pedestrian suspension bridge was built.



New Bridge located close to the village of Rosthwaite in the Borrowdale Valley is actually not so new and is also grade 2 listed. Where the nearby stepping stones are used to be a ford crossing until this was replaced by New Bridge. The bridge leads to a lovely riverside walk and Wainwright's smallest fell, Castle Crag.

Outdoor Pursuits



Outdoor Pursuits	Town	Telephone	Facilities	Advert page
Blencathra Centre Field Studies Council	Threlkeld, Keswick	017687 79601	☺ P 📶 🧑 🚫	
Cyclewise Whinlatter - Mountain Biking	Braithwaite, Keswick	017687 78711	☺ P 📶 🧑	18
Derwent Water Marina	Portinscale, Keswick	017687 72912	☺ P 📶 🧑 🐕 ♿	19
Go Ape Whinlatter	Keswick	0845 094 9726	☺ P 📶 🧑 🚫 🐕	18
Honister Slate Mine Adventure	Borrowdale, Keswick	017687 77230	☺ P 📶 🧑 🚫	19
Keswick Adventures	Keswick	07712 162088	☺ P 🐕	
Keswick Climbing Wall and Outdoor Adventure Centre	Keswick	017687 72000	☺ P 📶 🧑 🚫 🐕 ♿	
Keswick Rugby Club	Keswick	017687 80186	☺ P 📶 🧑 🐕	
Kong Adventure	Keswick	017687 75907	☺ 🧑 🚫	
Lake District Calvert Trust	Keswick	017687 72255	☺ P 📶 🧑 🚫 ♿	
Lake District Mobility	Keswick	017687 78469	☺ P 📶 🚫 🐕 ♿	
Mountain Memories - Outdoor Activities Provider	Keswick		☺ 📶	
Rookin House Equestrian and Activity Centre	Troutbeck, near Keswick	017684 83561	☺ P 📶 🧑	19
Watendlath Trout Fishery	Keswick	017687 77362	P 🧑 🚫 ♿	

☺ Children welcome P Parking 📶 Credit cards accepted
 🧑 Groups welcome 🚫 Cafe/Restaurant 🐕 Dogs Welcome ♿ Disabled access



Derwentwater Marina

There is nowhere better to have an adventure than Keswick in the Lake District. Keswick offers an extensive range of activities; if you can do it outdoors, you can do it in and around Keswick. Choose one of our outdoor activity providers for tuition in basic and advanced skills to ensure that you can enjoy your activities safely.

visitkeswick.com/attractions



Lake District Mobility



Derwentwater Marina



Keswick Climbing Wall



Cyclewise

Visit Whinlatter Forest

Welcome to England's only true mountain forest.

Whinlatter is home to stunning views, fantastic walks, exhilarating mountain biking, Go Ape adventures, spectacular running trails, rare wildlife and adventure play.



Forestry England

Whinlatter

Create your own adventure
at Keswick's mountain forest

Start at the visitor centre to plan your visit,
get trail maps and find out more about this
breathtaking forest and it's wildlife.

Enjoy forest walking trails with amazing views / Mountain bike
trails / Running trails / Siskins Cafe / Picnic areas / WildPlay
adventure play area / Gruffalo sculptures / GoApe Treetop
Adventure & Forest Segway / Cyclewise bike hire & shop

Whinlatter Forest, Braithwaite CA12 5TW
017687 78469 whinlatter@forestryengland.uk



[@Whinlatter](https://twitter.com/Whinlatter)

[Whinlatter](https://www.facebook.com/Whinlatter)

forestryengland.uk/whinlatter



TRAIL CENTRE BIKE HIRE



Cumbria
Tourism
Awards
2018
Adventure Experience
Award
WINNER

Take your adventure off road
at a UK leading Trail Centre!

MTB rentals • Electric Bikes • Guides • Repairs
Skills Coaching • MTB Specialist Shop

📞 017687 78711 🌐 cyclewise.co.uk

📍 Whinlatter Forest, CA12 5TW

In partnership with



Forestry England



BRAND NEW
ADVENTURES
SUMMER
2022

COMING SOON

FIND OUT MORE [GOAPE.CO.UK/WHINLATTER](https://goape.co.uk/whinlatter)

Open as usual 2022, please see our website
for opening times, participation and supervision ratios

VISIT KESWICK BLOG

Sign up for ideas and inspiration for your next visit

visitkeswick.com/
visit-keswick-blog

GET ON THE LAKE
WITH DERWENT WATER MARINA



red paddle co

BOATS FOR HIRE:
Paddle boards, Canoes, Kayaks, Rowing boats & Pedalo.

Book now at:
www.derwentwatermarina.co.uk

Portinscale, Keswick. CA12 5RF
info@derwentwatermarina.co.uk
Tel: 017687 72912

honister.com

MOUNTAIN ADVENTURE



All weather action and adventure

ROOKIN HOUSE
LAKELAND ADVENTURES

Please call for **017684 83561** for bookings and more information!
www.rookinhouse.co.uk

OPEN ALL YEAR

Pony Trekking, Family Rides, Riding Lessons, Archery, Air Rifles, Clay Shooting, Quad Bike Treks, Go Karting, Paintball & lots more!

Perfect for stag & hen do's as well as family celebrations and corporate days.



Troutbeck, Ullswater, Penrith, CA11 0SS • 017684 83561 • Follow:  



PLAN YOUR NEXT ADVENTURE

If you can do it outdoors, you can do it in Keswick.
Take yourself out of your comfort zone.



www.visitkeswick.com/adventure-keswick

Attractions, Spa & Beauty



Attraction	Town	Telephone	Facilities	Advert Page
Derwent Pencil Museum	Keswick	017687 73626	☺ 📺 📺 📺 📺 📺 📺 📺	
English Lakes Tours	Keswick	0333 335 0042	☺ 📺	
Fultons Lakes Jewellery Works	Keswick	017687 79798	☺ 📺 📺 📺 📺 📺	Back Cover
Greystoke Craft Garden and Barns	Penrith	017684 83984	📺 📺	
Honister Slate Mine	Borrowdale, Keswick	017687 77230	☺ 📺 📺 📺 📺 📺 📺 📺	19
Hope Park and Cafe	Keswick	017687 80844	☺ 📺 📺 📺 📺 📺	
Keswick Alhambra Cinema	Keswick	017687 72195	☺ 📺 📺 📺	22
Keswick Brewery Tours and Shop	Keswick	017687 80700	📺 📺	30
Keswick Launch	Keswick	017687 72263	☺ 📺 📺 📺	23
Keswick Ministries	Keswick	017687 80075	☺ 📺	22
Keswick Museum	Keswick	017687 73263	☺ 📺 📺 📺 📺	
Lake District Wildlife Park	Keswick	017687 76239	☺ 📺 📺 📺 📺 📺	
The Lakes Distillery	Bassenthwaite Lake, Keswick	017687 88857	☺ 📺 📺 📺 📺 📺	
Lakeland Hauntings	Keswick	07949 909365	☺ 📺 📺	
Mirehouse & Gardens	Keswick	017687 72287	☺ 📺 📺 📺 📺 📺	
Mountain Goat Tours and Holidays	Keswick	015394 45161	☺ 📺 📺 📺 📺	



The Falls Spa

A great range of attractions, museums, visitor centres and parks just waiting to be explored. From fun family days out to relaxation and pampering there's something for everyone whatever the weather.

visitkeswick.com/attractions
visitkeswick.com/spa-beauty



Attraction	Town	Telephone	Facilities	Advert Page
National Trust Borrowdale and Buttermere Valleys	Keswick	017687 74649		
Puzzling Place	Keswick	017687 75102	☺ 🅑 🅞 🅞 🅞 🅞	23
Rheged Centre	Penrith	01768 868000	☺ 🅑 🅞 🅞 🅞 🅞 🅞	23
Theatre by the Lake	Keswick	017687 74411	☺ 🅑 🅞 🅞 🅞 🅞 🅞	
Threlkeld Quarry and Mining Museum	Threlkeld, Keswick	017687 79747	☺ 🅑 🅞 🅞 🅞 🅞	
Whinlatter Forest Visitor Centre	Braithwaite, Keswick	017687 78469	☺ 🅑 🅞 🅞 🅞 🅞 🅞 🅞	18
Wordsworth Grasmere	Grasmere	015394 35544	☺ 🅑 🅞 🅞 🅞 🅞	51
Wordsworth House and Garden	Cockermouth	01900 824805	☺ 🅑 🅞 🅞 🅞 🅞	

Spa & Beauty	Town	Telephone	Facilities	Advert Page
The Falls Spa	Borrowdale, Keswick	017687 87704	🅑 🅞 🅞 🅞 🅞	
Low Briery Wellness	Keswick	017687 72044	🅑 🅞	39
Star Beauty	Keswick	017687 75945	🅞	
The Spa at Underscar	Applethwaite, Keswick	017687 71500	🅑 🅞 🅞 🅞	

☺ Children welcome 🅑 Parking 🅞 Credit cards accepted 🅞 Groups welcome
 ✕ Cafe/Restaurant 🅞 Dogs Welcome 🅞 Disabled access 🅞 EnjoyEngland Quality Award



#keswickreallakes

TAKE TIME TO EXPLORE THE GREAT INDOORS TOO

Keswick is also beautiful on the inside – with lots of unmissable attractions, visits, museums and more.

Explore
THE LAKE DISTRICT
WORLD HERITAGE SITE

For more information
visitkeswick.com

Visit
KESWICK
the lake district

"Like Sooty Buo looking for clues!" #keswickmuseum
- Jade M

Keswick Alhambra Cinema

Gorgeously restored heritage cinema, now with two screens!

www.keswickalhambra.co.uk • 017687 72195

Just off the market square: 36 St John's St, Keswick CA12 5AG



Keswick Ministries
HEARING • BECOMING • SERVING

Be refreshed, inspired and equipped

- in the heart of the Lake District

Join us for the
Keswick Convention
16th July - 5th August 2022

Church Weekends


Teaching & Training programme

Find out more www.keswickministries.org - or call us on 017687 80075

CELEBRATING OUR CENTENARY ~ ADVERTS TAKEN FROM OUR 1920S GUIDES

The Beauty Spot of England

at KESWICK-ON-DERWENTWATER



DERWENTWATER

Queen of The Lakes

KESWICK ENTERTAINMENTS PAVILION AND ALHAMBRA

WHITSUNTIDE TO SEPTEMBER.

PAVILION PALEIS DE DANCE OPEN DAILY SCHOFIELD EARL AND HIS LONDON BAND.	ALHAMBRA PICTURE HOUSE 2-30, 6-30, AND 8-30 P.M. ALL THE LATEST FILM SUCCESSES.
--	--

SOLE LESSEES - THE COUNTY ENTERTAINMENTS COMPANY

THE KESWICK-ON-DERWENTWATER LAUNCH CO., LTD.

TELEPHONE: 263 KESWICK


When visiting Keswick do not miss a trip on **Derwentwater** the Queen of the Lakes. Launches run to a time table and call at Ashness Gate for Watendlath, Lodore for the Waterfalls and Borrowdale, and Brandlehow for the National Trust Property and Catbells.

Row boats may be had at the following charges:—

1 person, 1/- per hour		Hire Charge per day:
2 persons, 9d. each per hour		1 to 3 persons, 7/6.
Over 2 persons 6d. each per hour		Over 3 persons 2/- each

Illuminated Launches will cruise around the Lake each evening, weather permitting, taking about 1 hour. Return fares, 1/6 each. Reduced fares for large parties. For further particulars apply, W. WALKER, Sec., 26, Church Street, Keswick.

KESWICK GOLF CLUB



Sporting 9-Hole Course, within 3 minutes of the Railway Station

Green Fees:

1 Day	3/-
1 Week	12/6
1 Month	30/-

Sunday play allowed

FURTHER PARTICULARS FROM:
ROBERT F. CHAMBERS AND FRANK C. ROGERS, JOINT HON. SECR., KESWICK GOLF CLUB



RHEGED

Cafe

Giant-screen Cinema
Showing the latest releases and live streaming

Gallery
Celebrating art, craft & design

Cafe
Relaxed all-day dining inspired by local produce

Indoor play area
Mini-world of slides, tunnels & tents

New meetings
Contemporary rooms with unlimited speciality coffee and tea

Penrith | Cumbria | CA11 0DQ | Open daily | Free parking
Just off the A66 | [book online at rheged.com](http://book.online.at.rheged.com)



THE PUZZLING PLACE

WORLD OF ILLUSION

Prepare to be **AMAZED!**
KESWICK, CA12 4BL
www.puzzlingplace.co.uk

VISIT KESWICK NEWSLETTER

Sign up to receive our monthly newsletter to find out what's happening in Keswick

visitkeswick.com/latest-newsletter

Keswick Market

Every Thursday and Saturday in Keswick's Market Square

Scan the QR code to see more details about our market traders




We're **Allerdale**



See the spectacular scenery of Derwentwater by Launch

Use our around the lake tickets to take a 50 minute trip around Derwentwater or use to hop on or off as you like all day until you reach your point of departure.

Adults £12.00 • Child £6.50 • Family Ticket £29.00 (2 adults and up to 3 children)
Single tickets also available on all landing stages around the lake.

KESWICK ON DERWENTWATER LAUNCH COMPANY LTD

Telephone : 017687 72263 Web : www.keswick-launch.co.uk FIND US BY SATNAV CA12 5DJ



Shopping & Galleries

Shopping	Town	Telephone	Facilities	Advert page
Bookends	Keswick	017687 75277		
Booths	Keswick	017687 73518	P ☒ ✕ ♿	
The Card Collection	Keswick	017687 71399	☒ 🐕	
Conquer Lake District	Keswick	07765 221422		25
Gifts by the Lake	Keswick	017687 71167	☒ 🐕	
John Young Furnishings	Keswick	017687 74848	P ☒	
Keswick Bikes	Keswick	017687 75202	P ☒ 🐕	
Keswick Cheese Deli	Keswick	017687 73377	☒ ♿	
Keswick Market	Keswick	07753 934540	🐕 ♿	23
Packhorse Court	Keswick	017687 71500		
Peter Rabbit and Friends	Keswick	017687 75189	☒ 🐕 ♿	
Podgy Paws Pet Shop	Keswick	017687 73737	☒ 🐕	
Ye Olde Friars	Keswick	017687 72234	☒	

Galleries	Town	Telephone	Facilities	Advert page
Lucy Pittaway Gallery	Keswick	01768 392160	☒ 👤 🐕	26
Northern Lights Gallery	Keswick	017687 75402	☒ 🐕 ♿	
Thorntwaite Galleries	Thorntwaite, Keswick	017687 78248	P ☒ 👤 ✕ 🐕 ♿	
Treeby and Bolton Shop and Gallery	Keswick	017687 72443	☒ ✕ 🐕	
Viridian Gallery	Keswick	017687 71328	☒	25

Treeby and Bolton Gallery



Enjoy browsing our many independent shops and galleries where you will find books, paintings, ceramics, jewellery, toys, bikes, foods & local produce. There is plenty of choice whether you are looking for gifts or treating yourself to a memento of your time in Keswick. You don't even need to wait until your next visit to Keswick because many of our shops sell their stock online.

visitkeswick.com/shopping

John Young Furnishings



Keswick is proud to have been a Fairtrade Town since 2005.

VIRIDIAN Gallery



www.viridiangallery.co.uk



Lucy Pittaway Gallery

Conquer
TRADING POST



PACKHORSE COURT, KESWICK
WWW.CONQUERLAKEDISTRICT.CO.UK

Parking
 Credit cards accepted
 Groups welcome
 Cafe/Restaurant
 Dogs Welcome
 Disabled access

79 Main Street
Keswick, CA12 5DS

lucy PITTAWAY
art gallery



Our flagship Keswick store is brimming with artwork and gifts for the whole family.
Stop by for beautiful original artwork and fine art prints, homeware and gifts.

art gallery

lucy PITTAWAY

art gallery



The UK's Most Popular Published Artist



The UK's Most Popular Published Artist

The UK's Most Popular Published Artist

01768 392160 | lucypittaway.co.uk

Follow us on [f](#) [t](#) [i](#) [p](#) @lucypittawayart

Festivals & Events 2022

General Events:

Words by the Water 14th - 20th March
Keswick Film Festival 24th - 27th March
Keswick Beer Festival 3rd - 4th June
Scruffs Dog Show 26th June
Keswick Convention 16th July - 5th August
Keswick Agricultural Show 29th August
Keswick Victorian Fayre 4th December

Sporting Events:

Keswick Mountain Festival 20th - 22nd May
10in10 Walking Challenge 18th June
The Lakesman Triathlon 19th June
Derwentwater Epic Lakes Swim 3rd July
Lakeland Trails 3rd September



NB: All dates correct at time of going to print. Please check dates on our website [visitkeswick.com/whats-on/events](https://www.visitkeswick.com/whats-on/events)



Food & drink



FOOD & DRINK	Town	Telephone	Facilities	Advert page
The Back Bar	Keswick	017687 73333	☺ 📶 🚶 🐕	
Bassenthwaite Lake Station Café	Bassenthwaite Lake, Keswick	017687 76599	☺ 📶 📶 🚶 🐕	
Brasserie 31 at the Skiddaw Hotel	Keswick	017687 72071	☺ 📶 📶 🚶 🐕	
The Bistro at the Distillery	Bassenthwaite Lake, Keswick	017687 88852	☺ 📶 📶 🚶	
The Borrowdale Hotel Restaurant & Bars	Borrowdale, Keswick	017687 77224	☺ 📶 📶 🚶 🐕	
Brossen Steakhouse	Keswick	017687 73333	☺ 📶 📶 🚶 🐕	
Cafe Hope	Keswick	017687 80844	☺ 📶 🚶 🐕	
Cafe Oswald's at Cranstons Cumbrian Food Hall	Penrith	01768 868680	📶 📶	30
The Chalet Tearooms & Restaurant	Portinscale, Keswick	017687 72757	☺ 📶 📶 🚶 🐕	
The George Restaurant	Keswick	017687 72076	☺ 📶 🚶	
Keswick and District Fair Trade Campaign	Keswick			
The Kings Arms Restaurant	Keswick	017687 72083	☺ 📶 📶 🚶	
Lake View Restaurant, Lodore Falls Hotel	Borrowdale, Keswick	017687 77285	☺ 📶 📶 🚶	
Laura in the Lakes	Keswick	017687 75050	☺	
LB's Pizza House	Keswick	017687 72083		

Kings Arms
Restaurant

Something to everyone's taste. Cafés and coffee shops during the day; pubs and restaurants in the evening. Try our local ales alongside local speciality dishes - a real taste of Cumbria! Or choose from a range of international cuisines.

visitkeswick.com/food



Lingholm Kitchen



Fultons



FOOD & DRINK	Town	Telephone	Facilities	Advert page
The Lingholm Kitchen and Walled Garden	Portinscale, Keswick	017687 71206		
Mizu Pan Asian Cuisine	Borrowdale, Keswick	0800 840 1246		
Parkside Restaurant	Keswick	017687 72072		
The Skiddaw Hotel Bar & Conservatory	Keswick	017687 72071		
Thyme Bistro	Keswick	017687 74426		
Treeby and Bolton Cafe	Keswick	017687 72443		
The Wild Strawberry Patisserie and Coffee Shop	Keswick	017687 74399		

Children welcome Parking Credit cards accepted Groups welcome Dogs Welcome Disabled access



Cumbrian Food Hall and Café Oswald's

Discover our butchery and deli ranges plus hundreds of products from our local suppliers. Relax with a cuppa and enjoy our tasty breakfast and lunch menus that celebrate Cumbrian produce.

CRANSTONS
butcher + maker

visit cranstons.net
Food Hall, Mon - Sat: 8am - 6pm, Sun: 10am - 4pm
Café: Mon - Fri 8am-4.30pm Sun 10am-3.30pm

Ullswater Road, Penrith, CA11 7EH
Just 2 minutes from M6 J40



KESWICK BREWING CO



BREWERY BAR, BEER GARDEN, SHOP & TOURS

VISIT OUR BAR

the **FOX TAP**



017687 80700

www.keswickbrewery.co.uk



#keswickreallakes

CHOSEN KESWICK? CHOOSE TO BOOK DIRECT.

Save local businesses up to 20% commission by booking through visitkeswick.com (we don't charge any commission!) or by booking direct. This way 100% of what you pay is going back into Keswick's economy.

Stay in

THE ENGLISH LAKE DISTRICT
WORLD HERITAGE SITE

Visit
KESWICK
the lake district
visitkeswick.com



Lane Foot Farm

Whether you are looking for a cosy B&B, stylish hotel, self-catering cottage or apartment, or want to get back to nature and camp, Keswick has a variety of accommodation on offer to suit all ages, tastes and pockets.

Wherever you choose to stay, support the local economy by booking through www.visitkeswick.com (we don't charge any commission) or by booking direct with the establishment.

All accommodation in this guide has been assessed to National Quality Assurance standards (Visit England, AA or Quality Cumbria) or has signed the Keswick Tourism Quality Charter. Further information about grading standards can be found in the Where To Stay section of our website www.visitkeswick.com.

Accessibility

All accommodation will have an Access or Accessibility Statement to help you make an informed decision about your stay. Please discuss your needs with the chosen establishment before making your booking. More information at www.visitkeswick.com/accessibility

Compliments, Comments and Concerns

Should a problem arise during your stay, whenever possible, discuss it with the management of the property first as they may be able to resolve the issue straight away. If the problem remains unresolved you can find information and advice on our website www.visitkeswick.com.

Keswick Tourism Association

KTA, publisher of this guide, is the independent, local, member organisation that promotes Keswick and the surrounding area as a holiday destination. It represents all sizes and types of tourism establishments and is committed to high standards of customer satisfaction. All bookings made through our website, [visitkeswick.com](http://www.visitkeswick.com), are completely secure and commission free.



Avondale

Serviced accommodation

Accommodation Options

Bed & Breakfasts • Guest Houses
Hotels • Farm Houses • Hostels

Be looked after on your holiday

- Cooked breakfasts
- Rooms cleaned
- Friendly service

How to book your holiday

All of the properties listed feature on the official visitor website for Keswick and the North Lakes: visitkeswick.com

KEEP IT IN KESWICK - BOOK DIRECT

Did you know that by booking via visitkeswick.com (we don't charge commission) or direct with the accommodation provider you are supporting the local economy?

COMPLETE LISTINGS ON PAGES 42-44

Inspection abbreviations: AA: Automobile Association, VE: VisitEngland, KTAC: Keswick Tourism Association Charter, QC: Quality Cumbria

Location Grid References: T: Town Map (see page 49) A: Area Map (see page 50)

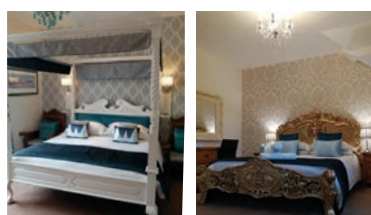
Pricing abbreviations: PRPN: Per Room Per Night



Allerdale House

Leigh and Mat welcome you to our spacious boutique guest house.

"More like a small hotel"

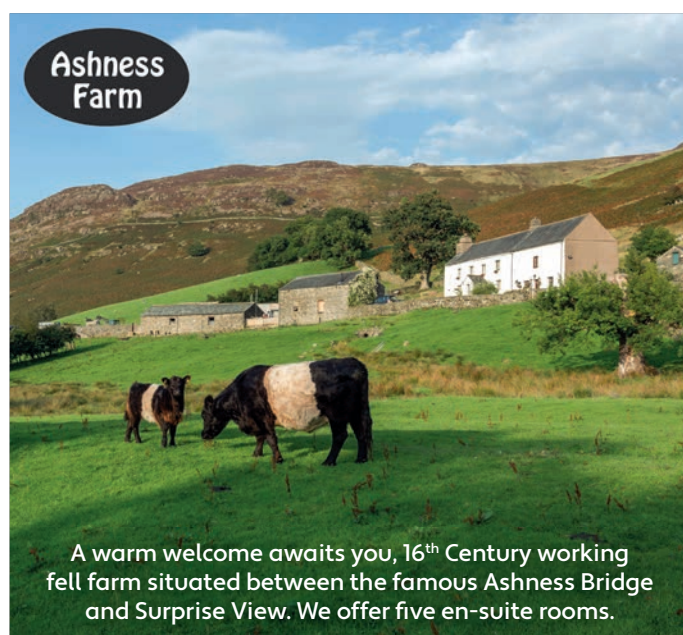


- Private Car Park
- Big rooms, big beds & baths available
- Large, quality breakfasts for all diets
- Homemade cakes
- Coffee machines in every room
- Quiet but central location
- Boutique styling throughout
- Local knowledge from local hosts
- Over 16's only, no pets

1 Eskin Street, Keswick CA12 4DH | 017687 73891
reception@allerdale-house.co.uk | www.allerdale-house.uk

VE ★★★★★ Silver | PRPN £104 - £130

T 8G



Ashness Farm

A warm welcome awaits you, 16th Century working fell farm situated between the famous Ashness Bridge and Surprise View. We offer five en-suite rooms.



www.ashnessfarm.co.uk

Ashness Farm, Borrowdale, Keswick CA12 5UN
E: enquiries@ashnessfarm.co.uk • T: 017687 77361

KTAC | PRPN £80 - £114 (Double or Twin) PRPN £60 - £72 (Single)

A 4B

Burleigh Mead

bed & breakfast accommodation

The Heads, Keswick, Cumbria, CA12 5ER Tel: 017687 75935



www.burleighmead.co.uk

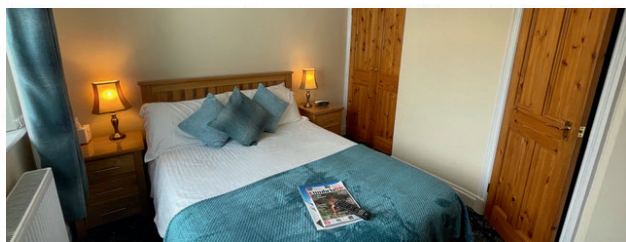
Email: info@burleighmead.co.uk

KTAC | PRPN £90 - £140

T 7D

The Paddock

KESWICK, CUMBRIA



WWW.THEPADDOCK.INFO

The Paddock Guest House, Wordsworth Street, Keswick, CA12 4HU

E www.thepaddock.info T 017687 72510

Quality en-suite accommodation, situated in a residential area, close to the town centre, lake, parks and fells. Lovely breakfasts, locally sourced products. Packed lunches available. Residents lounge.

Private car parking. WIFI access. Drying room for wet boots and coats. 'Ashness' Self catering accommodation also available in the town centre.



KTAC | PRPN £85 - £120

A 3B

T 7G



HARVINGTON HOUSE

A warm welcome and great hospitality. Deliciously cooked breakfast, clean comfortable rooms, quiet location near town and lake.

www.harvingtonhouse.co.uk

19 Church Street, Keswick CA12 4DX

E info@harvingtonhouse.co.uk

T 017687 75582

KTAC

PRPN £90 - £110

Swiss Court



A warm welcome, comfort and good food awaits you. Centrally situated in town, our elevated position affords magnificent views from every room. Open all year.

25 Bank Street, Keswick, Cumbria CA12 5JZ
T: 017687 72637 E: enquiries@swisscourt.co.uk
www.swisscourt.co.uk

KTAC | PRPN £88 - £100

T 6E

Sunnyside
GUEST HOUSE

Enjoy a Warm and Friendly
Keswick Welcome

Quiet, Central Location

Private Car Park

Beautiful en-suite Rooms

Large Guest Lounge with

free filter coffee and teas

Locally sourced quality

produce

Free, fast Wi-Fi



25 Southey Street, Keswick, Cumbria CA12 4EF | 017687 72446 |
enquiries@sunnysideguesthouse.com | www.sunnysideguesthouse.com

QC & KTAC | PRPN £85 - £105

T 7F



SCAFELL HOTEL

"IN THE HEART OF BORROWDALE"

017687 77208
info@scafell.co.uk
Scafell Hotel, Rosthwaite,
Borrowdale, Nr. Keswick, Cumbria,
CA12 5XB



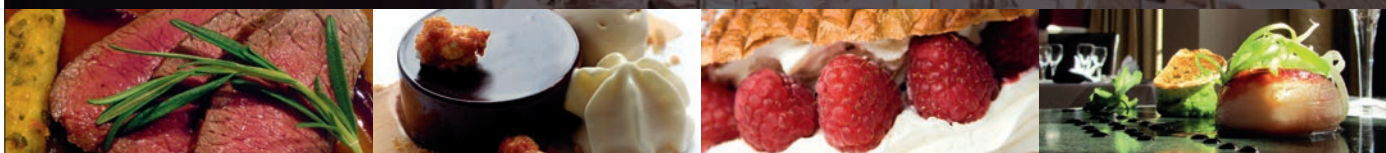
The Scafell Hotel is a wonderful Country House Hotel located in the very heart of Borrowdale, considered by many as England's finest valley, surrounded by mighty fells, tranquil meadows and crystal clear waters. A paradise for the walker and a perfect centre from which to visit other parts of the Lake District.

The Hotel is situated almost at the foot of Great Gable and the Scafell Massif, and is regarded as one of the Lake District's renowned headquarters for climbers and hill walkers. Keen anglers will appreciate the Scafell Hotel, as there is excellent fly fishing on the River Derwent and in Derwentwater. Those who are content with gentle rambling or just lazing on restful lawns fringed by trees amidst imposing scenery will be equally happy staying here. Our rooms were recently fully refurbished in a warm and rich Country House style with a contemporary twist, perfect for setting the scene for a peaceful and relaxing break in the beautiful Borrowdale Valley.

The restaurant, lounges and bar have been tastefully decorated and furnished to retain that all important Country House warmth, allowing for complete relaxation after a great day's walking on the Fells, and maybe even a little nap by the fire after a delicious 5 course Dinner.

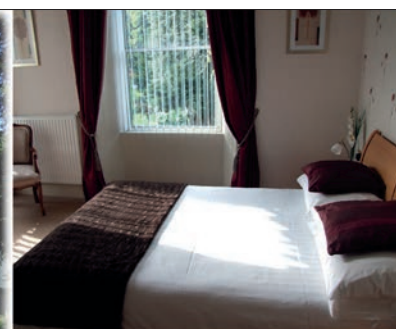
Under the constant direction of owner's Miles Jessop MBE (Chairman) and Andrew Nelson (Managing Director), the management and team of Scafell Hotel offer a truly warm and friendly service.

Individual and Independent Country House Hotel for the last 50 years.



VE*** GOLD BREAKFAST AWARD | AA*** SILVER | PRPN B&B £150 - £200 DB&B £190 - £280

A 4B



Greystones enjoys an enviable quiet location with splendid views of the surrounding mountains, yet is only a three minute walk to the pedestrianised centre of Keswick, with its many shops, cafés, traditional pubs and restaurants.

All bedrooms are en suite and each room has a flat screen TV, radio, hairdryer, tea/coffee trays.

There is a pleasant sitting room and seating area to the front overlooking St. John's Church.

Greystones

Ambleside Road
Keswick
Cumbria CA12 4DP

Tel. 017687 73108

www.greystoneskeswick.co.uk



Quality assured en suite accommodation

Private Parking

Safe storage for cycles, walking and golf equipment

Close to town centre

Drying facilities

Walking distance to Theatre and lake

Wi-Fi Internet Access

QC | PRPN £88 - £90

T 7F

Relax and take in one the finest views in England



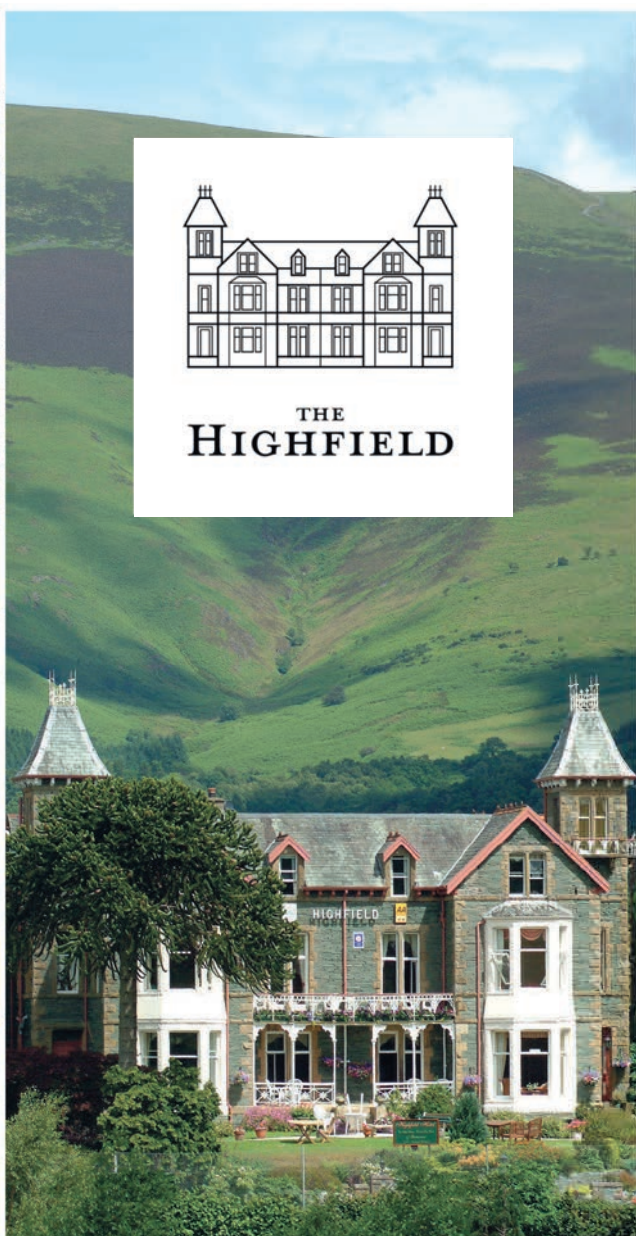
Enjoy The Highfield award-winning breakfast each day



We Are Covid-19 Safe

Sleep in our unique and beautifully designed rooms,
most with lake views

*Why not treat yourself and book the converted chapel
- The Woodford Suite*



The Heads, Keswick, Cumbria, CA12 5ER

T: 017687 72508

E: info@highfieldkeswick.co.uk

Best Price Guarantee when you book
online direct with The Highfield
www.highfieldkeswick.co.uk

A fully stocked Honesty Bar

Parking available on-site

Single, Twin, Double & King Size
rooms available

www.facebook.com/highfield.keswick



Self catering accommodation

Accommodation Options

Lakeland Cottages • Farm Complexes

Town Houses • Apartments

Select the Accommodation of your choice or find a Holiday Cottage through one of the Agencies listed.

INSPECTION ABBREVIATIONS:

AA: Automobile Association

VE: VisitEngland

KTAC: Keswick Tourism Association Charter

QC: Quality Cumbria

LOCATION GRID REFERENCES:

T: Town Map (see page 49)

A: Area Map (see page 50)

PRICING ABBREVIATIONS:

PUPW: Per Unit Per Week

How to book your holiday

All of the properties listed feature on the official visitor website for Keswick and the North Lakes: **visitkeswick.com**

COMPLETE LISTINGS ON PAGES 45-47



Skiddaw Grove
country guest house & self catering apartments



2 bedroomed self-catering apartment in superbly situated Georgian house with magnificent views.

10 minutes walk to town centre.

Seasonal heated outdoor swimming pool, free wi-fi and private parking.

www.skiddawgrove.co.uk

Skiddaw Grove, Vicarage Hill, Keswick, CA12 5QB
E: skiddawgrove@hotmail.com | T: 017687 73324

KTAC | PUPW £500 - £800
T2C

BREWERY LANE HOLIDAY COTTAGES, KESWICK



WWW.BREWERY-LANE.CO.UK
T: 017687 72750 E: info@brewery-lane.co.uk

KTAC | PUPW £370 - £745

T6F



T 6C 16 GRETA GROVE HOUSE

A spacious two bedroom, two bathroom first floor apartment, quiet location, close to the heart of Keswick, with parking.

www.keswickholidayhomes.co.uk

16 Greta Grove House, Elliott Park, Keswick CA12 5NF

E angela@keswickholidayhomes.co.uk

T 01768 201042

KTAC PUPW £360 - £800



T 6C ELLIOTT PARK APARTMENTS

Ground floor, two-bedroom apartments, with parking. Dog friendly Riverside View and Latrigg View are perfect bases for your Keswick holiday.

www.keswickholidayhomes.co.uk

Elliott Park, Keswick CA12 5NB

E angela@keswickholidayhomes.co.uk

T 01768 201042

QC PUPW £360 - £820



T 6C FELLTOPS

Modern, stylish, two bedroom, two bathroom, second floor apartment in quiet grounds, with parking. Fantastic views, walk from the door.

www.keswickholidayhomes.co.uk

6 Lonsdale House, Elliott Park, Keswick CA12 5NZ

E angela@keswickholidayhomes.co.uk

T 01768 201042

VE ★★★★★ PUPW £360 - £800



T 6C LILAC COTTAGE

Immaculately clean, two bedroom modern mews cottage with new kitchen and bathroom. Central location, with parking, minutes from town centre, parks and Derwentwater.

www.keswickholidayhomes.co.uk

17 Elm Court, Elliott Park, Keswick CA12 5NB

E angela@keswickholidayhomes.co.uk

T 01768 201042

VE ★★★★★ PUPW £360 - £800

VISIT KESWICK BLOG

Sign up for ideas and inspiration for your next visit

visitkeswick.com/
visit-keswick-blog



T 6C SKIDDAW

Wonderful second floor two bedroom, two bathroom apartment with fantastic views. Parking and lift access - easy access to Keswick, Derwentwater and the fells beyond.

www.keswickholidayhomes.co.uk

20 Greta Grove House, Elliott Park, Keswick CA12 5NF

E angela@keswickholidayhomes.co.uk

T 01768 201042

KTAC PUPW £450 - £820

KESWICK HOLIDAY HOMES

A selection of privately owned holiday cottages in the heart of Keswick
Your great value home from home



www.keswickholidayhomes.co.uk

01768 201 042

angela@keswickholidayhomes.co.uk

DERWENT HOUSE, PORTINSSCALE

Derwent House offers four fabulous self-catering properties providing modern luxury with character features and wonderful views.

Ideally situated for lake activities, great fell walking and Keswick a short walk away.



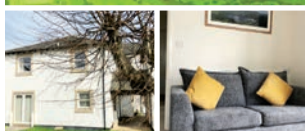
www.keswickholidayhomes.co.uk

Tel: 01768 201042 | Email: angela@keswickholidayhomes.co.uk

KTAC | PUPW £500 - £900

A 3B

Ideally located, Derwent Cottage is stylish and well equipped. A short stroll from Keswick Marketplace, Derwentwater and Fells. Two bedrooms, lounge, Smart TV, WiFi, separate kitchen and free parking.



01768 201042

ANGELA@KESWICKHOLIDAYHOMES.CO.UK

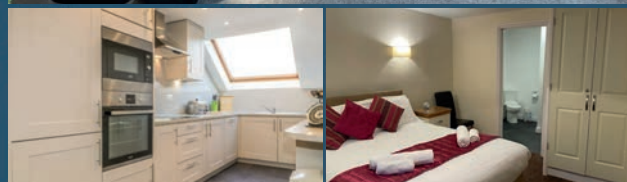
KESWICKHOLIDAYHOMES.CO.UK/PORTFOLIO/DERWENT-COTTAGE

QC | PUPW £460 - £800

T 6C

Ashness Apartment

www.ashness.net / info@ashness.net
017687 72510



Ashness Apartment, 66A Main Street, Keswick, CA12 5DX.

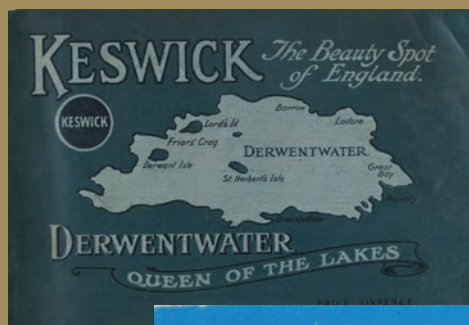
Self catering maisonette in Keswick town centre. Lower floor has 3 ensuite bedrooms. Upper floor, galley kitchen with views of Skiddaw. Dining area seating 6 people. Large lounge with stunning views over Keswick town centre, Clough Head and Skiddaw.

Pool table to keep all happy. 2 Town centre parking permits. WIFI.

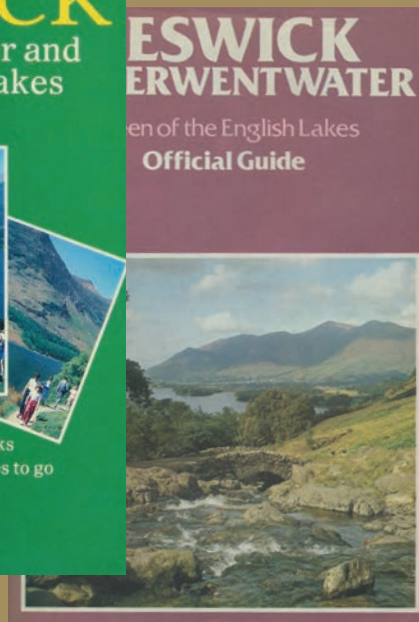
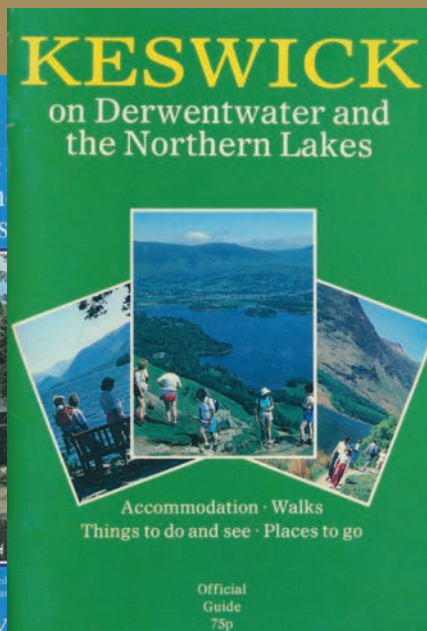
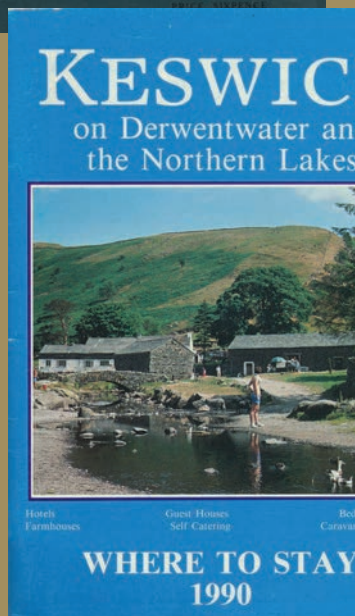
KTAC | PUPW £500 - £1500

T 3B

CELEBRATING OUR CENTENARY



Keswick Tourism Association has been publishing its visitor guide for 100 years. The Keswick Guide continues to be very popular with visitors though of course these days we now also provide information through our website www.visitkeswick.com and our social media channels.



ADVERTS TAKEN FROM OUR 1920S GUIDES

"HAZELDENE" PRIVATE HOTEL

TELEPHONE · KESWICK 106

This Hotel is conveniently situated within 3 minutes of the Lake, good views from all windows of Lake and Mountains

Within easy distance of Fitz Park, Tennis, Golf Club, Railway Station, and opposite Miniature Golf Course

Coaches and Motors leave daily for all excursions in the Lake District

Mrs. W. COCKBAIN - PROPRIETRESS



BURLEIGH MEAD, THE HEADS

KESWICK



Charming Private Hotel facing Lake Derwentwater and the beautiful Borrowdale Valley. Opposite Miniature Golf Course. Close to Shops and Post Office. Large Reception Rooms. Hot and Cold water. Electric Light throughout. Highly recommended. Personal Supervision.

Phone: Keswick 15

Moderate Terms on Application

Public Garage Near





HIGH SKYDES

Delightful, quiet two-bedroomed cottage, three minutes walk from town centre, overlooking river and park with mountain views. Dogs welcome.

www.highskydes.co.uk

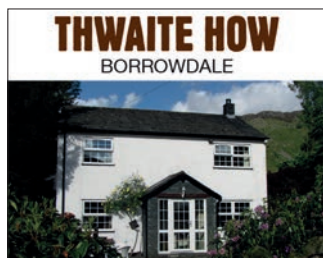
5 Millbank Cottages, Keswick CA12 5LY

E marianne.hough@talk21.com

T 01689 821049

QC

PUPW £345 - £795



THWAITE HOW BORROWDALE

Comfortable and well appointed detached house in a stone walled garden with mountain views. Large sitting room with open fire. High fell and valley walking from the doorstep. Pub, restaurants are nearby. Open All Year.

T: 01455 290168

E: ematproperties@hotmail.com
www.thwaitehow.co.uk

VE ★★★ | PW £365 - £730

A 4B



Self Catering Holiday Home Burns Knott, Keswick

A couples escape or family break? A two bedroom bungalow that sleeps 4. Walking distance from Keswick town centre and private parking. Enclosed patio garden, stunning views, immaculately clean and fully equipped. Open all year.

Gina and Graham Burn

017687 75582 | www.burnsknott.co.uk | info@harvingtonhouse.co.uk

KTAC | PUPW £679 - £1045

T 7H



The Bungalow Causeway Foot

Mrs J Nicholson
Causeway Foot Farm
Naddle, Keswick
Cumbria CA12 4TF

Well equipped bungalow with large garden & patio. Ideal base for exploring Keswick & the Lakes. Views of Skiddaw, Blencathra and Naddle valley. Minimum age 12

www.causewayfoot.co.uk Tel: 017687 72290

VE ★★★★★ | PW £390 - £650

A 3B



ROWANWOOD

Penrith Road Keswick

- Next to shops and town centre
- Superb views
- Fully equipped to a high standard
- Sleeps two
- Pets welcome
- Parking permit provided
- Linen provided

For details

Email stephendavison83@hotmail.com
Telephone 01623 627370

only £200 - £445 per week

KTAC | PW £200 - £445

T 6F

Low Briery Holidays



Low Briery Holiday Park is situated just one mile outside Keswick, in a beautiful wooded valley in the English Lake District. On the side of River Greta, Low Briery offers the perfect location for a peaceful holiday at any time of the year.

Wellness Spa opening mid 2022.

We have accommodation to suit all requirements and prices:

- 2 & 3 bedroom Luxury Lodges
- 2 bedroom Timber Lodges
- Apartments and Pods
- 2 Four bedroom Houses
- 2 & 3 bedroom Cottages
- and 2 & 3 bedroom Caravans.

Dog friendly units are also available.

We are open all year, even our caravans.



www.lowbriery.co.uk

stay@lowbriery.co.uk | 017687 72044

Low Briery Holiday Village, Keswick, Cumbria CA12 4RN

VE / KTAC | PUPW £350 - £1950



A 3B

Manesty

STAY • ENJOY • EXPLORE




- Cottages in Borrowdale, nr Keswick
- Wood fired hot tub
- Short breaks available year round
- Well tended extensive grounds
- Stunning location and views
- Walks from the door to nearby river, lake, woods and fells
- Local bus past the door Easter to early November
- Glamping in our retro caravan and shepherd's hut

Youdale Knot, Manesty, Keswick, CA12 5UG
017687 77216 cottages@manesty.co.uk www.manesty.co.uk

KTAC | PUPW £452 - £1304

A 4B

Camping, glamping, caravans and more

Accommodation Options

Camping • Touring • Yurts • Camping Barns
Holiday Parks • Lodges • Caravans

How to book your holiday

All of the businesses listed feature on the official visitor website for Keswick and the North Lakes: visitkeswick.com

COMPLETE LISTINGS ON PAGE 47



Dalebottom Farm
Caravan & Camping Park

Beautiful family run caravan and camping park nestled in the Naddle Valley surrounded by views of famous mountains including Blencathra, Skiddaw and Helvellyn

HOLIDAY HIRE CARAVANS • TOURING • CAMPING



www.dalebottomfarm.co.uk • 017687 74713
DALEBOTTOM FARM, NADDLE, KESWICK, CA12 4TF



EST. 1938

CASTLERIGG — HALL —

CARAVAN • CAMPING • GLAMPING



The Lake District

Holiday Hire Caravans
Camping Pods
Touring • Camping

Online Booking available

Welcome to Castlerigg Hall, one of Britain's most spectacular scenic caravan and camping parks set in the heart of the English Lake District.



Providing holiday experiences
since 1909

Stay in
THE ENGLISH
LAKE DISTRICT
WORLD HERITAGE SITE






Keswick, Cumbria CA12 4TE Tel: 017687 74499 www.castlerigg.co.uk info@castlerigg.co.uk

See more of the Lakes

by bus

COCKERMOUTH
TO KESWICK IN

32
MINUTES

HOP-ON
HOP-OFF

X4/X5

WORKINGTON
COCKERMOUTH
KESWICK
PENRITH



Plan your journey on the
Stagecoach Bus App



KEEP IT IN KESWICK - BOOK DIRECT

Did you know that by booking via **visitkeswick.com**
(we don't charge commission) or direct with the accommodation provider
you are supporting the local economy?

CELEBRATING OUR CENTENARY ~ ADVERTS TAKEN FROM OUR 1920S GUIDES

TELEGRAMS: "ROYAL OAK, KESWICK."

TELEPHONE No. 23.

ROYAL OAK HOTEL, KESWICK

RESIDENT MANAGERS—MR. & MRS. H. E. REVELL.

UNDER ROYAL PATRONAGE.

R.A.C., A.A., & M.U. HOTEL.

THIS Hotel, recently enlarged and redecorated, is one of the best-appointed Residential Hotels in the district. It is within a few minutes' walk of DERWENTWATER, the GOLF LINKS, the FITZ PARK, and the RAILWAY STATION. The Hotel Rooms are large and lofty, lighted by Electricity, and comprise Lounge, Dining Room (seating capacity at separate tables for 100 guests), Drawing Room, Reading Room, Smokeroom, and Dance Room. Excellent Bathrooms and Lavatory accommodation on all floors. Running water in most bedrooms.



From a Pen and Ink Sketch.

LARGE LOCK-UP
MOTOR GARAGE
WITH ACCOMMODATION
FOR 100 CARS.

Well-equipped
FOUR-IN-HAND
COACHES and
MOTORS leave the
Hotel Daily for all
parts of the
LAKE DISTRICT.

PROPRIETORS:
LAKE DISTRICT HOTELS,
LIMITED.

TELEGRAMS: "GEORGE HOTEL, KESWICK"

TELEPHONE 76

Ye Olde George Hotel, Keswick (FULLY LICENSED.)



From a Pen and Ink Sketch

A.A.

R.A.C.

YE OLDE GEORGE HOTEL is the oldest established Hotel in Keswick, an old coaching days' hostelry, combining home comfort with modern convenience. Electric light throughout. H. and C. water in all bedrooms. It is centrally situated, and is close to Derwentwater and Golf Course.

FULL INCLUSIVE BOARD FROM 14/- PER DAY

Catering for Private Parties a Speciality

WRITE FOR TARIFF

23

HOW TO BOOK: All the properties listed feature on the official visitor website for Keswick and the North Lakes: visitkeswick.com

INSPECTION AGENCY

VE	VisitEngland
AA	Automobile Association
QC	Quality Cumbria
KTAC	Keswick Tourism Association Charter
BGHP	British Graded Holiday Park

FACILITIES

	Children Welcome (Min Age)
	Parking (no. of spaces)
	Dogs Welcome
	Wireless Internet Access
	Single Rooms (no. of rooms)
	Disabled Access

KEEP IT IN KESWICK - BOOK DIRECT

Did you know that by booking via visitkeswick.com (we don't charge commission) or direct with the accommodation provider you are supporting the local economy?

BED & BREAKFASTS · GUEST HOUSES

Name	Town	Telephone	Facilities	Advert page
Abacourt House	Keswick	017687 72967	KTAC (4)	
Acorn House	Keswick	017687 72553	VE★★★★SILVER (6) (9)	
Allerdale House	Keswick	017687 73891	KTAC (6)	32
Amble House	Keswick	017687 73288	KTAC	
Appletrees	Keswick	017687 80400	KTAC (7) (2) (1)	
Ashness Farm B&B	Borrowdale, Keswick	017687 77361	KTAC (5)	32
Avondale Guest House	Keswick	017687 72735	AA★★★★SILVER (1)	
Badgers Wood	Keswick	017687 72621	AA★★★★GOLD (6) (2)	
The Beeches Guest House	Keswick	017687 72266	KTAC (5)	
Bramblewood Cottage Guest House	Keswick	017687 75918	VE★★★★SILVER (7) (3) (1)	
Brierholme Guest House	Keswick	017687 72938	KTAC (8) (6)	
Brookfield	Keswick	017687 72867	VE★★★★ (2)	
Brunlea Guest House	Keswick	017687 74247	QC (1)	
Burleigh Mead	Keswick	017687 75935	VE★★★★SILVER (8) (5)	33
Burnside B&B	Keswick	017687 72639	VE★★★★SILVER (10)	
Charnwood Guest House	Keswick	07725 847439	QC (3)	
Claremont House	Keswick	017687 72089	VE★★★★ (8) (6)	
Clarence House	Keswick	017687 73186	KTAC	
Craglands Guest House	Keswick	017687 74406	VE★★★★ (8) (7) (2)	
Cragside Guest House	Keswick	017687 73344	KTAC (6)	
Cragwood Guest House	Keswick	017687 73792	KTAC	
Cranford House	Keswick	017687 71017	QC (2)	
Cumbria House	Keswick	017687 73171	KTAC (5) (8) (2)	
Dolly Waggon	Keswick	017687 73593	KTAC (1)	
Eden Green	Keswick	017687 72077	AA★★★★ (8)	
The Edwardene	Keswick	017687 73586	AA★★★★GOLD (2) (2)	

Name	Town	Telephone	Facilities	Advert page
Ellergill Guest House	Keswick	017687 73347	VE ★★★★★ ☺ (10) P (4) 📶	
Fern Howe Guest House	Braithwaite, Keswick	017687 22268	KTAC ☺ P (10) 📶 🛏 (2) ♿	
The George Inn	Keswick	017687 72076	AA ★★★★★ ☺ P (4) 📶	
Glencoe Guest House	Keswick	017687 71016	KTAC ☺ (2) 📶 🛏 (1)	
Glendale Guest House	Keswick	017687 73562	KTAC 📶 🛏 (2)	
The Grange Country House	Keswick	017687 72500	VE ★★★★★SILVER P (11) 📶 🛏 (3)	
Grassmoor Guest House	Keswick	017687 74008	KTAC 📶	
Greystoke House	Keswick	017687 72603	KTAC ☺ (12) 🐕 📶 🛏 (1)	
Greystones	Keswick	017687 73108	QC P (7) 📶	34
Harvington House	Keswick	017687 75582	KTAC ☺ (12) 📶 🛏 (2)	33
Hawcliffe House	Keswick	017687 73250	QC 📶	
Hazeldene Bed and Breakfast	Keswick	017687 72106	KTAC ☺ (10) P (8) 📶	
Herdwick Guest House	Keswick	017687 72772	QC ☺ (12) 📶 🛏 (1)	
HillCrest 22 Guest House	Keswick	017687 72179	QC ☺ (5) P (3) 📶	
Lane Head Farm Country Guest House	Troutbeck, nr Keswick	017687 79220	VE ★★★★★ ☺ (8) P (9) 🐕 📶	
Lane Rigg Guest House	Keswick	017687 73122	KTAC P (5) 📶	
Laurel Bank	Keswick	017687 73006	VE ★★★★★SILVER ☺ P (5) 🐕 📶	
Leonards Field House	Keswick	017687 74170	VE ★★★★★SILVER ☺ (12) 📶	
Lowthwaite B&B	Matterdale	017684 82343	KTAC ☺ P (6) 📶 🛏 (2)	
Lynwood	Keswick	017687 72081	KTAC ☺ (10) 📶 🛏 (2)	
Maple Bank Guest House	Braithwaite, Keswick	017687 78229	KTAC ☺ (5) P (7) 🐕 📶	
Mosedale End Farm Bed and Breakfast	Mungrisdale	07917 050893	QC ☺ (5) P (6) 📶 🛏 (1)	
The Mount B&B	Portinscale, Keswick	07900 251351	QC ☺ (8) P (6) 🐕 📶	
Number 10 BnB	Keswick	017687 73455	KTAC P (3) 📶	
The Paddock Guest House	Keswick	017687 72510	KTAC ☺ (5) P (6) 📶	33
Pitcairn House	Keswick	017687 72453	VE ★★★★★ ☺ (8) P (3) 📶	
Portland House	Keswick	017687 74230	VE ★★★★★ ☺ (12) 📶 🛏 (1) ♿	
Rivendell	Keswick	017687 73822	KTAC ☺ (5) 📶 🛏 (2)	
The Royal Oak at Keswick	Keswick	017687 74584	AA ★★★★★GOLD ☺ 🐕 📶 🛏 (1)	
Sandburne Vegetarian Guest House	Keswick	017687 73546	VE ★★★★★GOLD ☺ (6) P (4) 📶	
Sandhills Farm	Bassenthwaite, Keswick	017687 76307	QC P ♿	
Scales Farm Country Guest House	Threlkeld, Keswick	017687 79660	VE ★★★★★SILVER ☺ P (7) 🐕 📶 ♿	
Seven Oaks	Keswick	017687 72088	KTAC ☺ (12) 📶	
Skiddaw Croft	Portinscale, Keswick	017687 72321	KTAC ☺ (8) P (5) 📶 🛏 (2)	
Strathmore Guest House	Keswick	017687 72584	KTAC P (6) 📶 🛏 (2)	

BED & BREAKFASTS · GUEST HOUSES continued

Name	Town	Telephone	Facilities	Advert page
Sunnyside Guest House	Keswick	017687 72446	QC ☺(12) P(7) ☺ B(2)	33
Swiss Court Guest House	Keswick	017687 72637	KTAC P(3) ☺ B(2)	33
Tarn Hows	Keswick	017687 73217	KTAC P ☺ B(3)	
Thorngreen	Keswick	07487 773143	KTAC ☺	
Thornthwaite Grange	Thornthwaite, Keswick	017687 78205	VE★★★★ ☺(5) P(5) 🐾 ☺	
Watendlath Guest House	Keswick	017687 74165	QC ☺ ☺	
Winchester House	Keswick	017687 73664	KTAC ☺(8) 🐾 ☺	
Yew Tree House	Keswick	017687 74323	QC ☺ B(2)	

HOTELS

Name	Town	Telephone	Facilities	Advert page
Best Western Plus Castle Inn Hotel	Bassenthwaite, Keswick	017687 76401	AA★★★★ ☺ P 🐾 ☺	
Borrowdale Gates Hotel	Borrowdale, Keswick	017687 77204	AA★★★★Country House ☺ P(30) 🐾 ☺ B(4) ♿	
The Highfield Hotel	Keswick	017687 72508	VE★★★SILVER ☺ P(18) ☺ B(2)	35
Keswick Country House Hotel	Keswick	08448 115570	AA★★★★ ☺(14) P(25) ☺	
Keswick Park Hotel	Keswick	017687 72072	AA★★★ ☺ P(9) ☺ B(2)	
Scafell Hotel	Borrowdale, Keswick	017687 77208	VE★★★GOLD ☺ P(100) 🐾 ☺ B(3)	34

HOSTELS

Name	Town	Telephone	Facilities	Advert page
Derwentwater Independent Hostel	Borrowdale, Keswick	017687 77246	KTAC ☺ P(30) ☺	

CELEBRATING OUR CENTENARY ~ ADVERTS TAKEN FROM OUR 1920S GUIDES

ILLUSTRATED TARIFF ON APPLICATION TELEPHONE NO. 20

THE KESWICK HOTEL

TOURISTS to the Lake District would be well advised to make Keswick their headquarters. As a Motor and Coaching Centre it is unrivalled in the whole of the English Lake District.

The "KESWICK" is an up-to-date Hotel in an ideal position in the heart of LAKELAND, and will be found replete with every modern comfort and convenience.

The Sanitary arrangements are regularly inspected by a proper authority.

Public Coaches and Motors leave the Keswick Hotel daily, in the season, for all parts of the district.



KESWICK - ON - DERWENTWATER

UNDER THE PERSONAL SUPERVISION OF THE PROPRIETORS - MR. AND MRS. WIVELL

Telephone—Borrowdale 5 Telegrams—"Borrowdale Hotel, Keswick"

BORROWDALE HOTEL

(FULLY LICENSED)

This Hotel is situated in the Centre of Borrowdale, and close to the shore of Lake Derwentwater.



Commands unequalled views of the Lake and Mountain scenery of the prettiest part of the English Lake District

Boating on the Lake and excellent Trout Fishing Electric Lighting and all modern conveniences

MOTORS MEET TRAINS BY ARRANGEMENT
GARAGE R. A. C. A. A.

LAKE DERWENTWATER, KESWICK

WRITE FOR TARIFF TO THE MANAGERESS

SELF CATERING COTTAGES, APARTMENTS ETC.

Name	Town	Telephone	Sleeps up to	Facilities	Advert page
Acorn Apartments	Keswick	017684 80310	4	KTAC   	
Acorn Cottage, Manesty House and Crandy Nook	Keswick	017687 80088	8	VE★★★★    	
Alison's View, Byways, Morrels and Blencathra	Keswick	017687 80088	4	VE★★★★   	
Appletree, Tawny, Barf, Jasmine Cottage, Harney Peak & Roslin	Portinscale, Keswick	017687 80088	6	VE★★★★    	
Ashness Apartment	Keswick	017687 72510	6	KTAC   	37
Bawd Hall	Newlands Valley, Keswick	01900 828189	10	VE★★★★★GOLD   	
Birchgate, Daisy, Catherine Cottage & Fellseeker	Keswick	017687 80088	4	VE★★★★    	
30 Blencathra Street	Keswick	07812 575631	8	VE★★★★   	
Brackenrigg Barn Cottages	Keswick	017687 72258	4	VE★★★★    	
Brackenrigg House	Keswick	017687 72258	10	VE★★★★    	
Brewery Lane Holiday Cottages	Keswick	017687 72750	4	KTAC   	36
Bridge House Cottages & Apartments	Keswick	017687 80088	8	VE★★★★GOLD    	
Brigham Farm Apartments	Keswick	07599 369056	4	KTAC    	
The Bungalow	Keswick	017687 72290	6	VE★★★★  (12)  	39
Burns Knott	Keswick	017687 75582	4	KTAC   	39
Chapelfield Cottage	Borrowdale, Keswick	017687 77693	3	VE★★★★   	
Croft House Cottages	Applethwaite, Keswick	017687 73693	4	VE★★★★GOLD   	
Croftlands Cottages	Thornthwaite, Keswick	07535 310209	4	KTAC    	
Cumbria House Self Catering	Keswick	017687 73171	15	KTAC   	
Derwent Cottage	Keswick	01768 201042	4	KTAC    	37
Derwent House, Portinscale	Portinscale, Keswick	01768 201042	4	KTAC    	37
Elliott Park Cottages & Apartments	Keswick	017687 80088	4	VE★★★★    	37
Felltops	Keswick	01768 201042	4	VE★★★★   	37
Fornside Farm Cottages	St John's in the Vale, Keswick	017687 79173	6	VE★★★★GOLD    	
Gill Brow Cottage	Newlands Valley, Keswick	017687 78270	6	KTAC    	
Grange House	Keswick	017687 72500	20	KTAC  (8)   	
Greta Grove House no. 16	Keswick	01768 201042	4	KTAC   	37
Greta View, Cherry Garth & Park View	Keswick	017687 80088	6	VE★★★★   	
Hedgehog Hill Apartments	Keswick	017687 80654	2	KTAC  	
Hideaway Cottage	Keswick	0115 9634186	2	KTAC 	
High Rigg	Keswick	01582 872574	6	VE★★★★   	
High Skydes	Keswick	01689 821049	4	KTAC    	39
High Spy	Keswick	07305 985724	5	VE★★★★GOLD   	
Hill Top Holiday Let	Keswick	07780 838031	10	KTAC   	
Holly Cottage	Keswick	07738 468940	6	KTAC    	

SELF CATERING COTTAGES, APARTMENTS ETC. continued

Name	Town	Telephone	Sleeps up to (£)	Facilities	Advert page
Idwal Cottage Keswick	Keswick	017687 72360	2	KTAC P	
Keswick View	Keswick	017687 85130	4	VE★★★★☺ P	
Lakeland View Lodge	Keswick	07548 695089	4	KTAC☺ P	
Lanefoot Loft	Thornthwaite, Keswick	017687 78097	2	VE★★★★ P	
Latrigg View and Riverside View	Keswick	01768 201042	4	QC☺ P	
Lilac Cottage	Keswick	01768 201042	4	VE★★★★GOLD☺(8) P	37
The Lingholm Estate Unique Holiday Lets	Portinscale, Keswick	017687 74238	14	KTAC☺ P	
Lords Seat and Lake View Apartment	Thornthwaite, Keswick	017687 80088	6	VE★★★★★ P	
Low Briery Holiday Village Self Catering	Keswick	017687 72044	10	KTAC☺ P	39
Manesty Holiday Cottages	Borrowdale, Keswick	017687 77216	7	KTAC☺ P	39
Millside & Stanger Cottage	Braithwaite, Keswick	017687 80088	4	VE★★★★☺ P	
Mona House	Keswick	07792 711793	10	KTAC☺	
Morven Cottage	Keswick	017687 74324	4	VE★★★★☺ P	
The Mount Self Catering	Portinscale, Keswick	07900 251351	11	KTAC☺ P	
Newlands	Portinscale, Keswick	01274 774974	7	KTAC☺ P	
Newlands Apartment	Keswick	01727 822861	4	VE★★★★☺ P	
The Old School House	Threlkeld, Keswick	0161 9286290	6	VE★★★★☺ P	
5 & 7 Police Court Yard Keswick	Keswick	0800 840 1243	4	KTAC☺ P	
Primrose Cottage, 10 Greta Street	Keswick	07802 151320	4	KTAC☺ P	
The Ridgeway, Skiddaw Skies & Fairbank	Keswick	017687 80088	6	VE★★★★☺ P	
Riverside Cottage and Lydia's River Cottage	Keswick	017687 76007	5	VE★★★★GOLD☺ P	
Rock Lynn, Rose Bank Cottage & Causey View	Braithwaite, Keswick	017687 80088	5	VE★★★★☺ P	
Rowanwood	Keswick	01623 627370	2	KTAC☺	39
San Ging	Keswick	07720 034494	8	VE★★★★GOLD P	
Skiddaw 20 Greta Grove House	Keswick	01768 201042	4	KTAC P	37
Skiddaw Grove Self-Catering Apartment	Keswick	017687 73324	5	KTAC☺ P	36
Slate Knoll	Keswick	017687 76405	4	QC☺ P	
Slee Cottage	Keswick	017687 76347	6	KTAC☺ P	
Thwaite How	Borrowdale, Keswick	01455 290168	6	VE★★★★☺ P	39
Tithe Cottage, Isabel Cottage, Sams Cottage & Greta Side	Keswick	017687 80088	3	VE★★★★☺ P	
Tithebarn Mews, no 2	Keswick	0161 4855097	4	KTAC☺ P	
The Town Houses, Alban Rise & Abacourt Cottage	Keswick	017687 80088	10	VE★★★★ P	
Underscar	Keswick	017687 71500	6	KTAC☺ P	
The Views Keswick	Keswick	07986 472558	2	KTAC P	
Woolstore Cottage and Sunny Bank Cottage	Keswick	01609 772489	4	VE★★★★☺ P	

AGENCIES

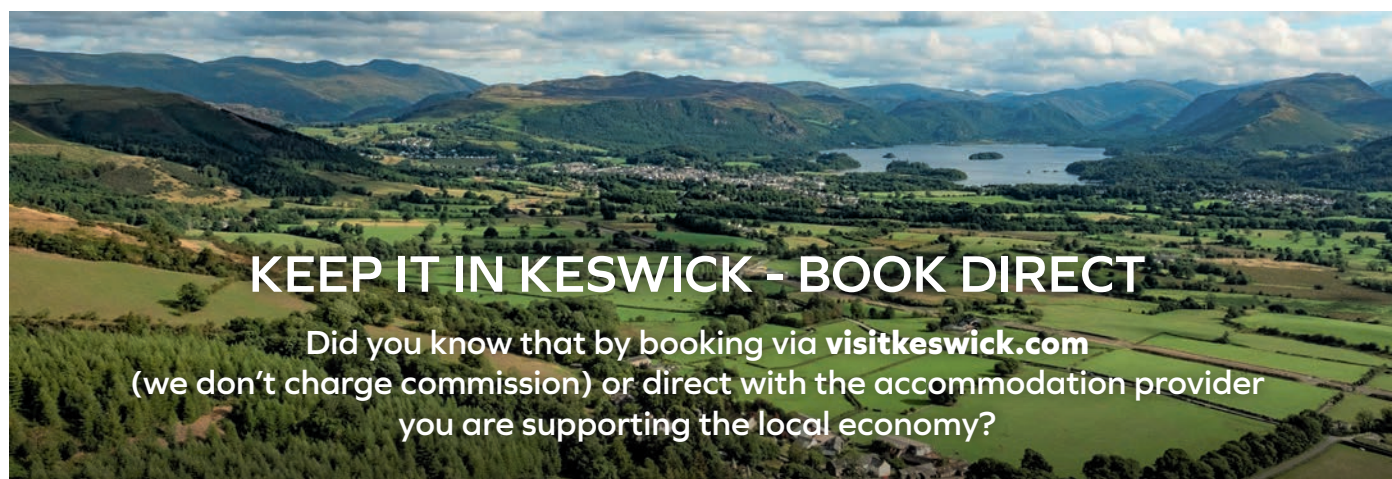
Name	Telephone	Facilities	Advert page
Holidaycottages.co.uk	01237 459888	KTAC 🍷 P 🐕 📶	
Keswick Cottages	017687 80088	VE ★★★★★ 🍷 P 🐕 📶 ♿	
Keswick Holiday Homes	01768 201042	VE ★★★★★ P 🐕 📶	37
Lakeland Cottage Company	01539 760741	KTAC 🍷 P 🐕 📶	
Sally's Cottages	017687 80571	KTAC 🍷 P 🐕 📶 ♿	
Sykes Cottages	01244 356695	KTAC P 🐕 📶	

CAMPING, GLAMPING, TOURING AND YURTS

Name	Town	Telephone	Facilities	Advert page
Carrock Glamping Pods	Hesket Newmarket		KTAC P	
Castlerigg Hall Hexpods	Keswick	017687 74499	BGHP ★★★★★ 🍷 P 🐕 📶	40
Castlerigg Hall Touring Caravan & Camping Park	Keswick	017687 74499	BGHP ★★★★★ 🍷 P 🐕 ♿	40
Dalebottom Farm Caravan and Camping Park	Keswick	017687 74713	KTAC 🍷	40
Glamping at Mosedale End Farm	Mungrisdale	07917 050893	QC P	
Inside Out Camping (Yurts)	Borrowdale, Keswick	07791 184271	QC 🍷 🐕	
Lanefoot Farm Campsite and Glamping	Thornthwaite, Keswick	017687 78097	VE ★★ 🍷 P 🐕	

HOLIDAY PARKS, LODGES AND CARAVANS

Name	Town	Telephone	Facilities	Advert Page
Castlerigg Hall Caravan Holiday Homes	Keswick	017687 74499	BGHP ★★★★★ 🍷 P 🐕 📶	40
Causeway Foot Holiday Caravans	Keswick	017687 72290	VE P	
High Moss Farm Caravans	Keswick	017687 76841	KTAC 🍷 P 🐕	
Keswick Reach Lodge Retreat	Keswick	017687 76510	KTAC 🍷 P 🐕 📶	
Low Briery Holiday Village	Keswick	017687 72044	KTAC 🍷 P 🐕 📶	39
Youdale Knot Holiday Caravan	Borrowdale, Keswick	017687 77216	KTAC 🍷 P 📶	39





Getting Around

GETTING TO KESWICK

By Road

Keswick is easily reached via junction 40 of the M6 (Penrith) or the A1 and the A66. For a scenic route coming from the South leave the M6 at junction 36 and take the A591 through Windermere, Ambleside and Grasmere.

By Rail

The nearest railway station to Keswick is Penrith, on the West Coast Main Line. A regular bus service, taking forty minutes, connects Penrith railway station with Keswick Bus Station. The historic Settle to Carlisle Railway line brings passengers from Yorkshire via the Eden Valley.

By Taxi

Taxis from Keswick will meet trains at railway stations and airports by prior arrangement.

Contact Davies Taxis on 017687 72676 for transport to Keswick. 4, 6, and 8 seated vehicles are available.

By Coach

National Express operates services to Keswick
Tel - 08717 818181

By Ferry

For visitors from Europe there are sailings to Hull and Newcastle whilst from Ireland there are sailings to Stranraer. Journey times to Keswick are between 2 and 3.5 hours.

GETTING AROUND KESWICK

By Bus

Use the local buses and enjoy car free days whilst you are here. Timetables are available from the National Park Information Centre in the Moot Hall and also on our website www.visitkeswick.com.

By Bike

Cycling is an excellent way to explore the area. Several long distance cycle routes pass through the area including the C2C 71. There are a range of cycle trails in Whinlatter Forest. Take a look at our cycling pages on www.visitkeswick.com.

Bike hire available from: Keswick Bikes - 017687 75202
Cyclewise Whinlatter - 017687 78711

Take a Tour

Sit back on a sightseeing tour and let the experts guide you to the best spots.

Mountain Goat Tours - 015394 45161
English Lakes Tours - 0333 335 0042

By Launch

Why not see the spectacular scenery around Derwentwater from one of the Keswick Launches. Stop off at one of the boat landings to take a stroll along the lakeshore and catch the launch again further along the route. The various landing stages also provide the excellent starting or finishing point to longer walks up the surrounding fells.

Keswick Launch - 017687 72263

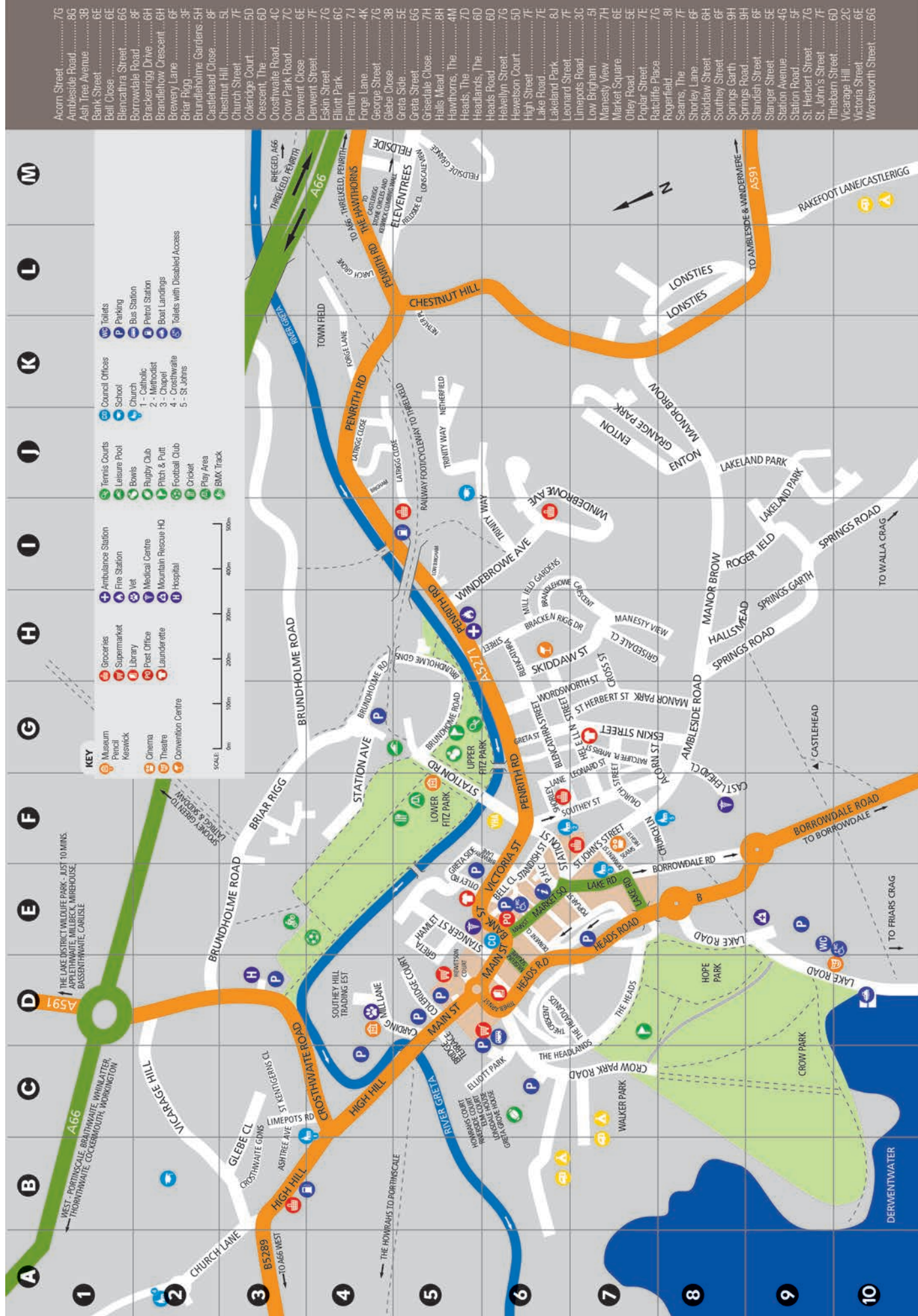
Park and Sail

Pay to park at Keswick Rugby Club and receive a discount voucher for the launch.

Parking in Keswick

There are several car parks in Keswick run by Allerdale Borough Council and in addition locally operated car parks run by Keswick Town Council, Keswick Football Club and Keswick Rugby Club.

Please see our town map opposite for locations of car parks.





Wordsworth

GRASMERE

Dove Cottage • Garden–Orchard • Woodland Museum • Café • Shop • Activities & Events

Wordsworth Grasmere is Cumbria's 'must-see' cultural experience telling the story of a remarkable time in the Wordsworth's lives, inspired by William and Dorothy Wordsworths' words in the very place they were written.

Highlights of your visit

Step into another century as you experience the sights, sounds and smells of Dove Cottage ...



... and stroll in the garden, restored to the spirit of their 'little domestic slip of mountain' that the Wordsworths lovingly created.

Enjoy more of the outdoor space and explore the wild and relaxing space in the Woodland ...



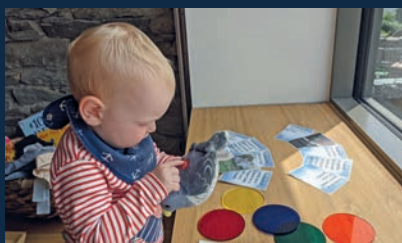
... and discover the story of Wordsworth's radical and creative life told through manuscripts, letters and personal items.

Take in views of Grasmere vale from the Museum's Viewing Station ...



... and take something home to remind you of your visit, maybe a book of poems, or a journal.

Activities for our young visitors ...



... and activities and events to prebook, or stumble upon.

Find out more: wordsworth.org.uk

20% off
When you
arrive by bus



'Peaceful our valley, fair and green'...

'Grasmere – A Fragment' by Dorothy Wordsworth

Wordsworth Grasmere is only 12 miles south of Keswick, a short bus ride on the Stagecoach 555 to the Grasmere Dove Cottage stop. Visitors who show their bus ticket receive 20% off standard admission.

Dove Cottage, Grasmere, LA22 9SH. T: 015394 35544

Reflecting the beauty of the Lakes



Our jewellery is **exclusively**
designed and handcrafted
in our **Keswick** workshop.
Available in store or online.



Design

Shop

Café

Fulton's
Lakes Jewellery Works
Bespoke Jewellery Makers Since 1990



MEMBER
The National
Association
of Jewellers



Member
The
GOLDSMITHS'
Company

Off Bell Close Car Park, Keswick, Cumbria, CA12 5JD | 017687 79798 | info@fultonjewellery.co.uk

 fultonjewellery.co.uk

 [fultonsljw](https://www.instagram.com/fultonsljw)

 [fultonjewellery](https://www.facebook.com/fultonjewellery)

